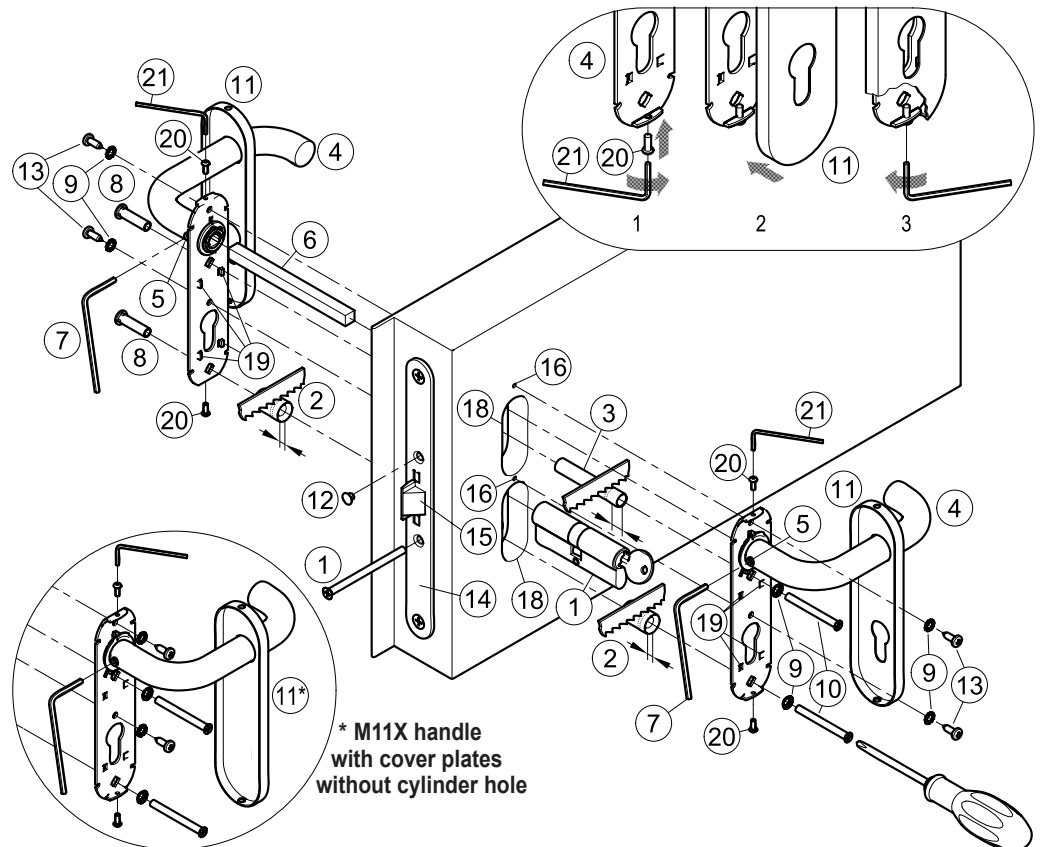


## PRODUCT DESCRIPTION

Internal and external stainless steel lever handle with a return spring, stainless steel cover plates (with cylinder hole if M1X), satin-finished and safety-shaped. Reversible for the installation onto doors with Right (DX) or Left (SX) opening direction.

## CONTENTS OF THE M1X - M11X HANDLE PACKAGE

pos.	pcs.	description
2	02	Spacer Ø15mm
3	01	Spacer Ø10,3mm
4, 5	02	Handle with installation plate and socket set screw
6	01	9x9x125mm square spindle
7	01	S3 hex key
8	02	M5 threaded insert
9	06	Toothed washer
10	02	M5x50mm countersunk flat head screw
11	02	Stainless steel cover plate
12	01	Black cap hole Ø8,8mm
13	04	Pan head self tapping screw Ø4,2x13mm
20	04	M3x8mm pan head screw
21	01	S2 hex key
-	01	Installation instructions
-	02	Tension pin for spring hinge
-	01	S4 hex key
-	01	S6 hex key



## INSTALLATION

- Check the package contents, keeping in mind that the cylinder and related screw are supplied separately only in case of M1X.
- In case of M1X insert the cylinder (1 - not supplied) and fasten it temporarily with the screw (1 - not supplied), then remove the key.
- In case of leaf with slots (18), adjust the plastic spacers (2 and 3) to the thickness of the leaf so that they do not protrude more than 1mm from it.
- In case of leaf without slots (18), knock the tabs (19) back and drill holes for fastening screws (8 and 10) on the leaf.
- Insert the square spindle (6) in one of the stainless steel handle (4) and fix it with the fastening socket set screw (5), using the S3 hex key (7).
- Screw the screws (20) onto installation plate of both handles (4), just enough for insert the covers plates (11). Insert the two threaded inserts (8) onto installation plate of one handle, making sure that it's well-centred.
- Insert the two spacers (2 and 3) over the threaded inserts and apply the handle on the pull-side of the door, being careful to center the square spindle (6) and the inserts (8) over their respective holes of the lock (14).
- Apply the second handle to the push-side of the door after inserting the screws (10), toothed washers (9) and spacer (2).
- Center the square spindle, screws and, in case of M1X, cylinder, starting the screws by hand before fastening them with the screwdriver, avoiding any deformation of the installation plates.
- Use the handle to ensure that the latch bolt (15) of the lock opens easily and fully.
- Tighten the socket set screw (5) of the handle from push-side of the door with the S3 hex wrench (7).
- In case of M1X handle, finish fastening of the cylinder (1).
- Insert the little cap hole (12) in the open hole of the lock (14).
- Use the handle to ensure that the latch bolt (15) opens easily and fully. In case of M1X, further check if the latch bolt opens and if the deadbolts are operating both by using the key. Test the door in both open and closed positions, from both sides of the door. If necessary file down the plastic strike box, when the opening becomes difficult due to friction.
- Use the installation plates as template to drill the holes (16) with the Ø2mm drill bit, from both sides of the leaf. Fasten additionally the installation plates with self-tapping screws Ø4,2x13mm (13) and their toothed washers (9).
- Insert the stainless steel cover plates (11) over the handles (drw. 2). Unscrew the screws (20) to fasten the cover plates, using the S2 hex key (21) and avoid any deformation (drw. 3).

## USE INSTRUCTIONS

The handle is intended with the passing square spindle for use onto doors provided of lock with latch bolt and central lock (the latter for M1X). Check that the handle doesn't bump against obstacles or wall, when the door is opened. Avoid unnecessary strains on or handling of the handle.

## MAINTENANCE

It is recommended to carry out the following maintenance checks at least once a month, verifying that all components are in satisfactory operational condition. Particularly:

- Check whether all screws are fully tightened, tightening any that may have loosened.
- Check whether handle and, in case of M1X, key can be moved with minimal effort, and that the latch bolt of the lock retreats from the strike box without offering resistance.
- Ensure that the latch bolt exits completely when the handle is released.
- Check that the handle do not have play, replace the worn parts if necessary.
- This product requires no special maintenance. Grease spray should be used to lubricate the internal workings of lock and handle.

## WARNINGS

- Installation should be carried out in strict conformity with the instructions supplied. For a correct installation all supplied components must be used, including spacers and toothed washers.
- Any adjustments that become necessary must be carried out by qualified personnel using original NINZ replacement parts.

## SPARE PARTS

Code **3105069** package for M1X [25] contains:

pos.	pcs.	description
2	02	Spacer Ø15mm
3	01	Spacer Ø10,3mm
6	01	9x9x125mm square spindle
12	01	Black cap hole Ø8,8mm
13	04	Pan head self tapping screw Ø4,2x13mm
	02	Tension pin for spring hinge

## TOOLS REQUIRED

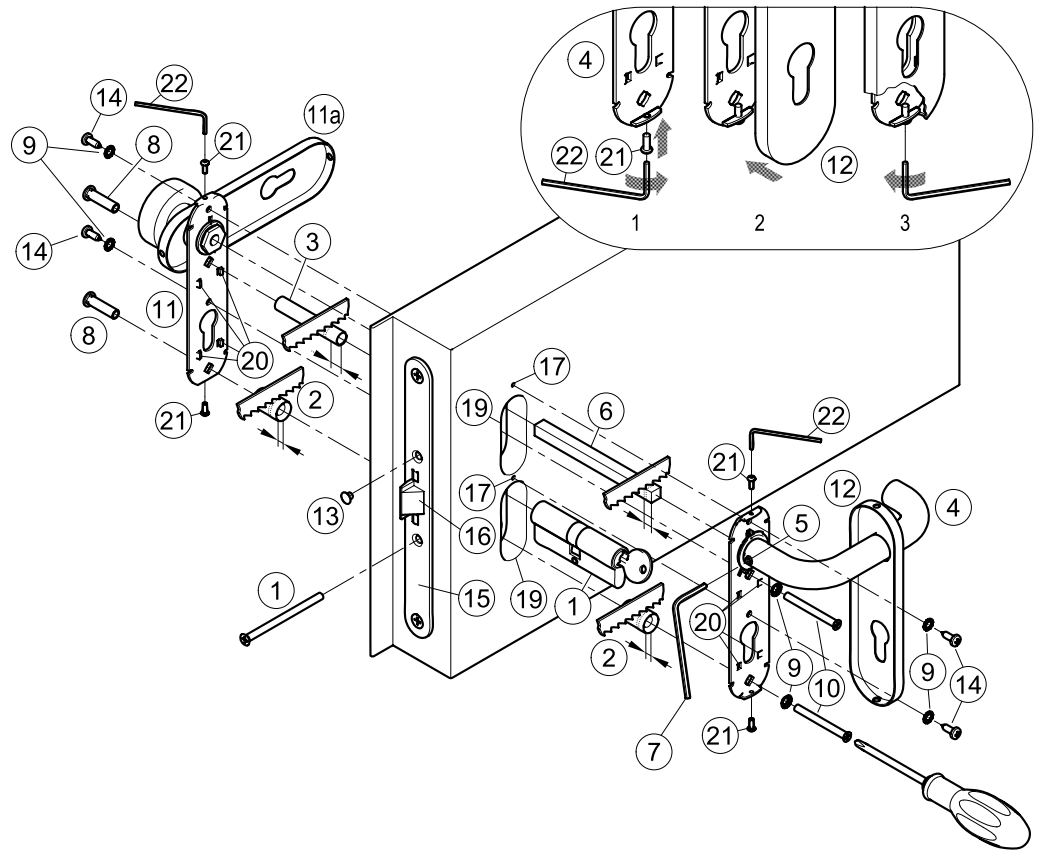
Medium-sized Philips-head screwdriver, electric drill with Ø2mm drill bit for steel, fine-toothed hack-saw.

### PRODUCT DESCRIPTION

Internal stainless steel lever handle with a return spring, stainless steel fix doorknob and cover plates with cylinder hole, satin-finished and safety-shaped. Reversible for the installation onto doors with Right (DX) or Left (SX) opening direction.

### CONTENTS OF THE M2X HANDLE PACKAGE

pos.	pcs.	description
2	02	Spacer Ø15mm
3	01	Spacer Ø10,3mm
4, 5	01	Handle with installation plate and socket set screw
6	01	Square spindle 9x9x85mm
7	01	S3 hex key
8	02	M5 threaded insert
9	06	Toothed washer
10	02	M5x50mm countersunk flat head screw
11, 11a	01	Fix doorknob with instl. plate + stainless steel cover plate
12	01	Stainless steel cover plate
13	01	Black cap hole Ø8,8mm
14	04	Pan head self tapping screw Ø4,2x13mm
21	04	M3x8mm pan head screw
22	01	S2 hex key
-	01	Installation instructions
-	02	Tension pin for spring hinge
-	01	S4 hex key
-	01	S6 hex key



### INSTALLATION

- Check the package contents, keeping in mind that the cylinder and related screw are supplied separately.
- Insert the cylinder (1 - not supplied) and fasten it temporarily with the screw (1 - not supplied), then remove the key.
- In case of leaf with slots (19), adjust the plastic spacers (2 and 3) to the thickness of the leaf so that they do not protrude more than 1mm from it.
- In case of leaf without slots (19), knock the tabs (20) back and drill holes for fastening screws (8 and 10) on the leaf.
- Insert the square spindle (6) into the stainless steel handle (4) and fix it with the fastening socket set screw (5), using the S3 hex key (7).
- Screw the screws (21) onto installation plate of handle (4) and fix doorknob (11), just enough for insert the covers plates (11a and 12). Insert the two threaded inserts (8) onto installation plate of the doorknob, making sure that it's well-centred.
- Insert one spacer (2) at push-side of the door and place the handle (4) at the leaf being careful to center the square spindle (6) in the lock (15) and the installation plate over the cylinder (1). To pay attention that the square spindle (6) does not protrude from the leaf, otherwise to cut it as far as necessary.
- Insert the two spacers (2 and 3) over the threaded inserts (8) and apply the doorknob on the pull-side of the door, being careful to center the inserts over their respective holes and the installation plate over the cylinder.
- Apply screws (10) and toothed washers (9).
- Center the cylinder, the threaded inserts and the screws, starting the screws by hand before fastening them with the screwdriver; take care to not deform the installation plate.
- Use the handle to ensure that the latch bolt (16) of the lock opens easily and fully.
- Finish fastening of the cylinder (1), insert the little cap hole (13) in the open hole of the lock (15).
- Use the handle to ensure that the latch bolt (16) opens easily and fully. Further check if the latch bolt opens and if the deadbolts are operating both by using the key. Test the door in both open and closed positions, from both sides of the door. If necessary file down the plastic strike box, when the opening becomes difficult due to friction.
- Use the installation plates as template to drill the holes (17) with the Ø2mm drill bit, from both sides of the leaf. Fasten additionally the installation plates with self-tapping screws Ø4,2x13mm (14) and their toothed washers (9).
- Insert the stainless steel cover plate (12) over the handle, turn the cover plate of the fix doorknob (11a). Unscrew the screws (21) to fasten the cover plates, using the S2 hex key (22) and avoid any deformation (pic. 3).

### USE INSTRUCTIONS

The handle is intended with the passing square spindle for use onto doors provided of lock with latch bolt and central lock. Check that the handle or doorknob doesn't bump against obstacles or wall, when the door is opened. Avoid unnecessary strains on or handling of the handle.

### MAINTENANCE

- It is recommended to carry out the following maintenance checks at least once a month, verifying that all components are in satisfactory operational condition. Particularly:
- Check whether all screws are fully tightened, tightening any that may have loosened.
  - Check whether handle and key can be moved with minimal effort, and that the latch bolt of the safe lock retreats from the strike box without offering resistance.
  - Ensure that the latch bolt exits completely when the handle is released.
  - Check that the handle do not have play, replace the worn parts if necessary.
  - This product requires no special maintenance. Grease spray should be used to lubricate the internal workings of lock and handle.

### WARNINGS

- Installation should be carried out in strict conformity with the instructions supplied. For a correct installation all supplied components must be used, including spacers and toothed washers.
- Any adjustments that become necessary must be carried out by qualified personnel using original NINZ replacement parts.

### SPARE PARTS

Code 3105070 package for M2X [26] contains:

pos.	pcs.	description
2	02	Spacer Ø15mm
3	01	Spacer Ø10,3mm
6	01	9x9x85mm square spindle
7	01	S3 hex key
9	02	M5 Toothed washer
13	01	Black cap hole Ø8,8mm
14	04	Pan head self tapping screw Ø4,2x13mm
	02	Tension pin for spring hinge

### TOOLS REQUIRED

Medium-sized Philips-head screwdriver, electric drill with Ø2mm drill bit for steel, fine-toothed hack-saw.